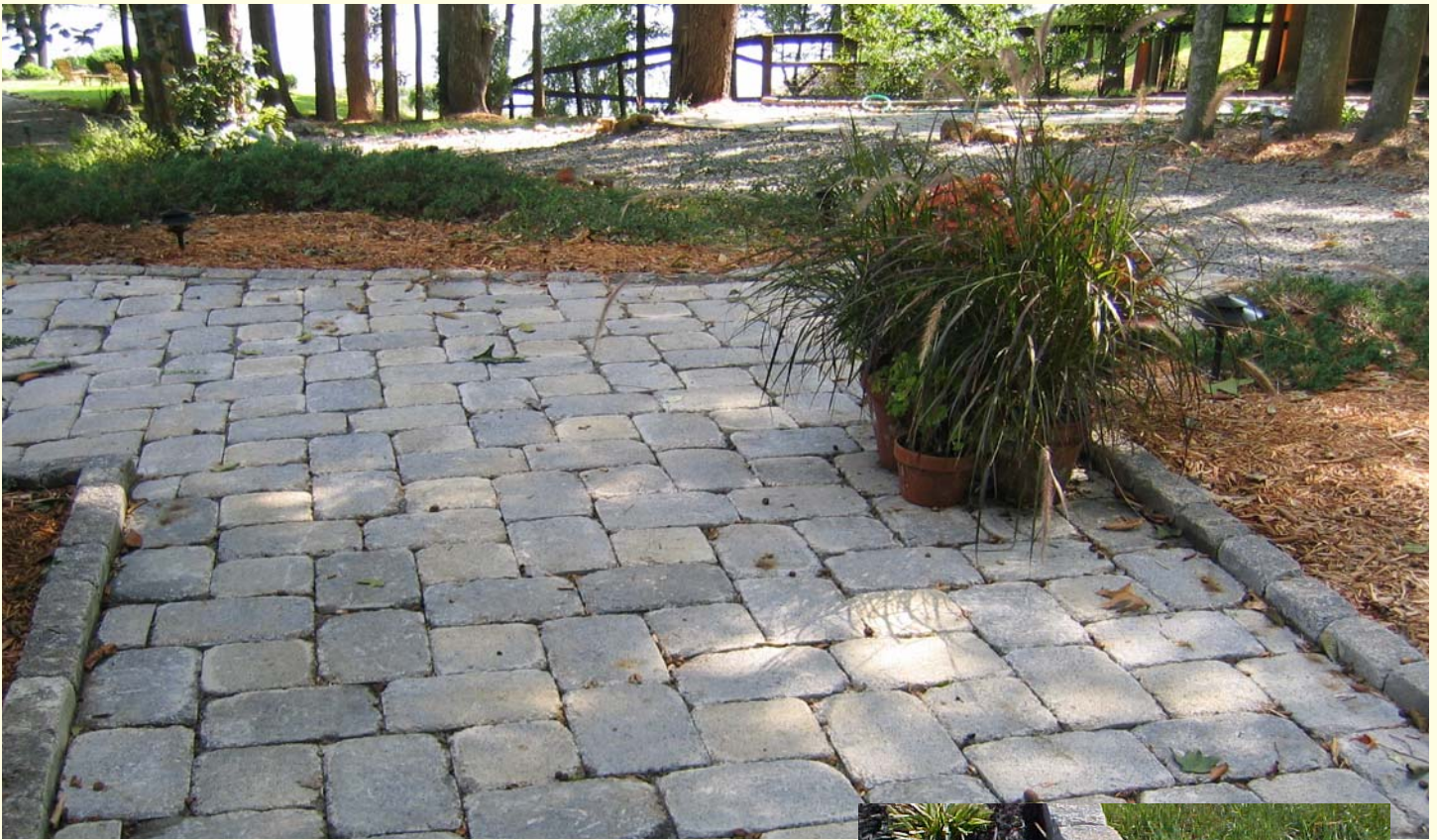


Weathered Curbstone



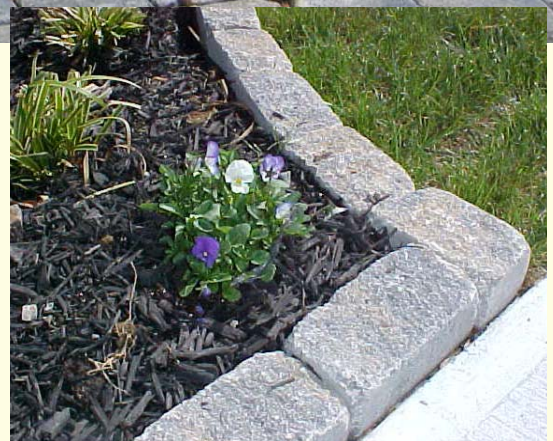
Weathered Curbstone

Weathered Curbstone is the finishing touch to your Grotto Hardscapes' creation. Install borders for trees and planting beds or build curbs for driveways and walkways. Weathered Curbstone is available in a variety of colors to integrate beautifully with Weathered Versa-Lok® Units, Estate Wall and Estate Paving Stone.™

Uses: borders, driveway curbs, tree rings planting beds, path edges, mowing strips

Estimating Guide:

_____ linear feet x 1.5 units = _____ units req.



6" x 8" x 4"

GROTTO
HARDSCAPES

www.grottohardscapes.com

Retaining Wall Systems

Raised Patios

Architectural Tile

Pavers

Curbs

Edging